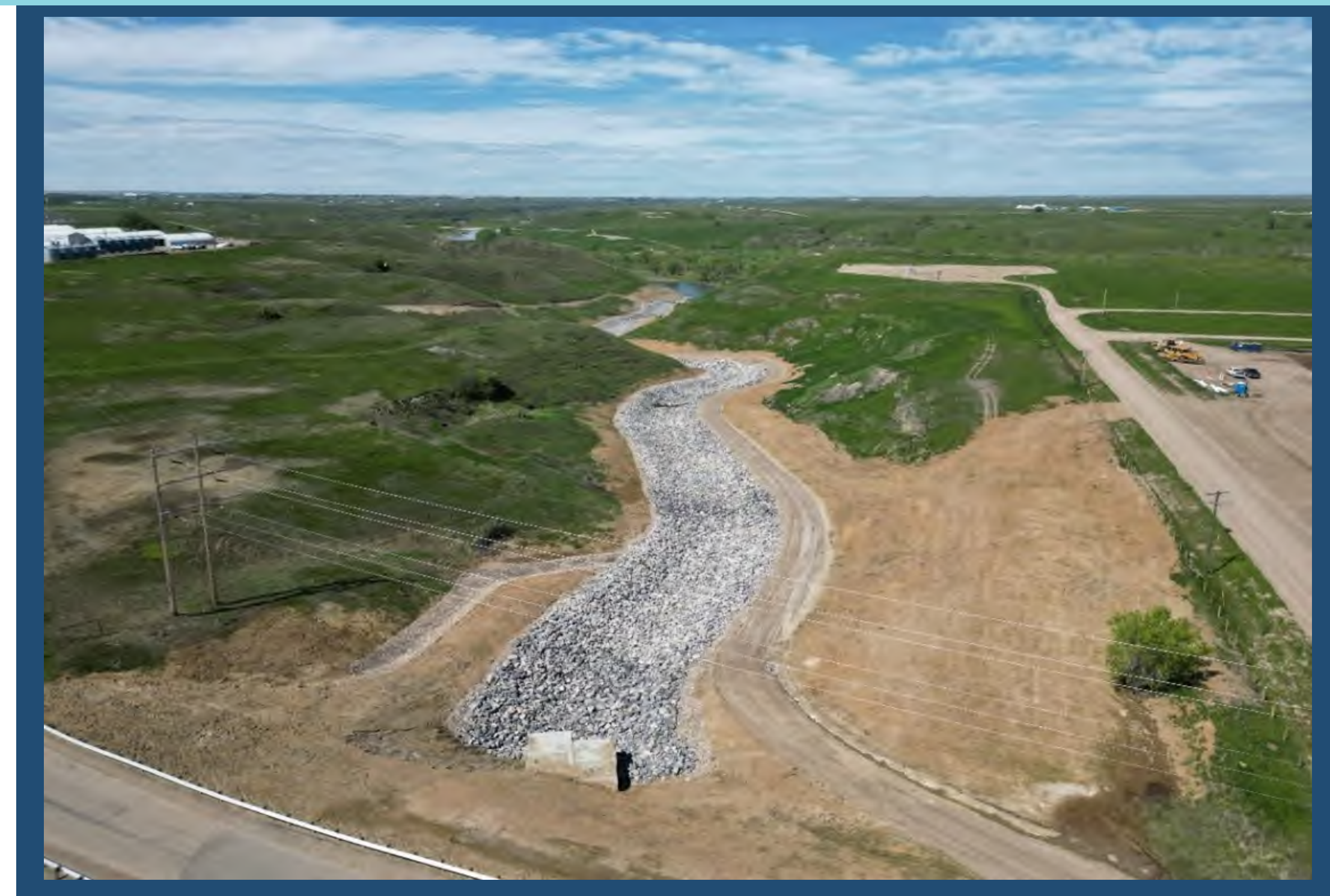


Flooding at the confluence of the SMRID Main Canal / Horsefly Channel in June 2014 at land location S ½ 5-9-15 W4 after rainfall exceeded 100 mm (Courtesy of MPE, a Division of Englobe)

- Significant flooding from major rainfall and snowmelt events in 2010, 2011, 2013, 2014 and 2018 prompted various parties in southern Alberta to come together to find solutions to reduce the impact of flooding.
- MPE, a Division of Englobe, was commissioned to complete a Regional Stormwater Management Plan in 2014. The report recommended seven flood mitigation projects.
- Projects have been selected based on estimated value and projections for return on investment and enacted based off of available funding opportunities.
- Funding for the completion of the Sauder Reservoir Spillway and preliminary and detailed design engineering for Chin Reservoir Expansion has been generated through the Alberta Infrastructure Modernization (AIM) program.



Construction Underway in the Drain Channel and Down the Coulee to the Oldman River (MPE, a Division of Englobe)



Construction Complete Down the Coulee to the Oldman River (MPE, a Division of Englobe)

Horsefly Spillway:

The Horsefly Regional Emergency Spillway began in 2020 and is being administered by the MD of Taber on behalf of the SRSDC. A majority of the cost is covered by grants acquired by the MD of Taber including the Alberta Community Resilience Program (ACRP), Investing in Canada Infrastructure Program (ICIP), and Disaster Mitigation Adaptation Fund (DMAF). However, the SRSDC partners have all contributed financially to the project as well.

- Phase 1: Complete**
Operational capacity remains at 7.5 m³/s but maximum capacity has been increased to 55 m³/s as a result of construction to handle flood flows.
- Phase 2: In Design**
- Phase 3: Under Construction**



Typical Road Crossing Structure Replacement with Precast Concrete Box Culverts



Typical Check Drop Structure Replacement



Big Bend Main Canal Inlet Structure Prior to Replacement (Start of Horsefly Spillway – Phase 1)



Big Bend Main Canal Inlet Structure After Replacement in May 2023 (Horsefly Spillway – Phase 1)

SMRID purchased lands and will assume ownership and maintenance of the works after construction, with the exception of Paradise Creek Dry Dam. Project Management is a major commitment for these projects. Recognizing that, the SRSDC has initiated an effort to set up a Municipal Controlled Corporation (MCC). If unanimously approved by all parties, the MCC will give the SRSDC a formal governing framework that is able to apply for provincial and federal funding, incur debt, and establish a board of directors through which the remaining projects can be managed and delivered.